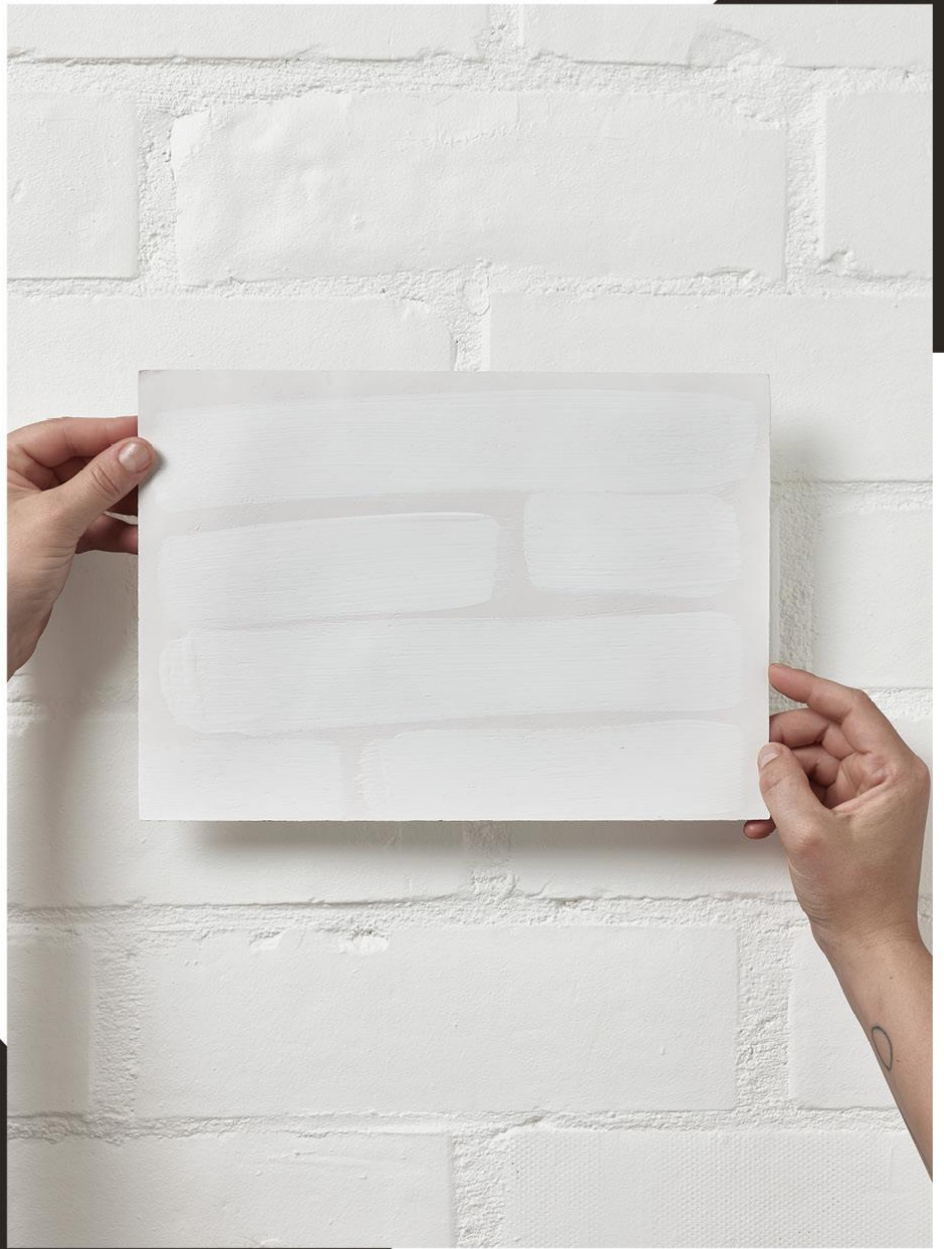


Museum
Leuven



15.03
→ 01.09.24

SARAH SMOLDERS

A Space Begins, With Speaking



mleuven.be/programma/sarah-smolders

Vlaanderen
verbeeldt werk. leuven

Courtesy of the artist Sarah Smolders,
photo: Sarah Smolders

IN THIS ISSUE

BIOGRAPHY	3
INTRODUCTION	4
HER WORK	4
THERE IS MORE	6
ALSO IN M	6
PRACTICAL	8
CONTACT	9

BIOGRAPHY

Sarah Smolders lives and works in Brussels.

The artist studied at the Royal Academy of Fine Arts and at the Higher Institute of Fine Arts, both in Ghent.

Smolders has had solo exhibitions at LLS Paleis in Antwerp (*Withdrawals*, 2022), Société in Brussels (*Un Signe*, 2022), the White House project space in Lovenjoel (*Doppelgänger*, 2021), CC Merksem (*On Language*, 2021), Marion de Cannière gallery (*Notes Of A Housepainter*, 2019) and Netwerk Aalst (*Concrete/Concrete*, 2018). Smolders has also participated in group exhibitions at the Kunsthof Extra City (Antwerp, 2018), M HKA (Antwerp, 2019), Espace Vanderborght (Brussels, 2019), Zomertank (Leuven, 2023) and the Fred&Ferry Gallery (Antwerp, 2023). Sarah created a work for Vittorio Veneto in Italy in 2018 and has just finalised a public artwork for Borgerhout (*Time, Set in Stone*, 2023).

Sarah Smolders was an artist-in-residence at Leo XIII (Tilburg) in 2011 and a guest at Fondation CAB (Brussels) in 2019. The artist also worked at the Frans Masereel Centre (Kasterlee) in 2009, 2020 and 2021.



Sarah Smolders in haar studio, België, 2023 © Sarah Smolders, foto: Lien Hùwels

INTRODUCTION

For her presentation at M, Sarah Smolders combines different residues for the first time, as part of a new spatial intervention in the exhibition spaces next to the museum's roof terrace.

In doing so, Smolders deploys both the memory of the space and her own oeuvre. Residues of site-specific actions are brought back to the studio and then re-applied in new exhibitions, as her own spatial alphabet.

HER WORK

Sarah Smolders' work arises in dialogue with a specific space and its architectural features, which she closely observes and annotates through painterly interventions and elements. Changes and additions that are nearly impossible to notice at first glance invite the viewer to slow down and view and experience the space unexpectedly.

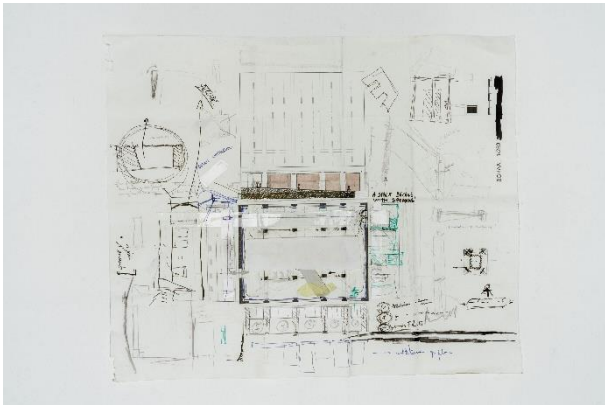
The apparent simplicity of this exhibition involves an intensive thought and making process in and with the spaces of M. The removal of the temporary exhibition architecture restores spatial connections and vistas, while specific patterns and material motifs bring in the story of the museum building.

Precise additions and interventions invite us to look at the corners, edges, folds, tops and bottoms of the exhibition space. These spatial figures encourage us to assess imperfections in the space in a different way.

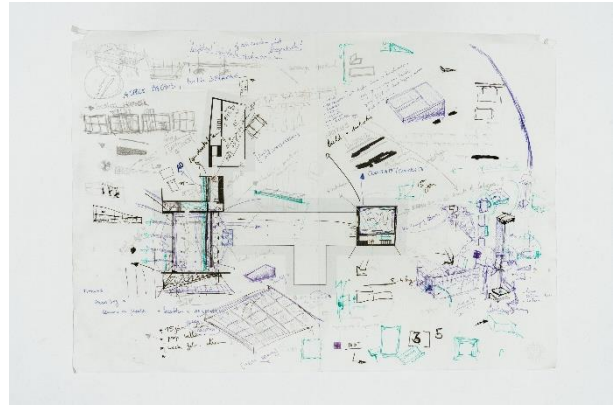
Here at M, Smolders combines for the first time a new spatial intervention with residues from past site-specific exhibitions. She uses those residues as her own spatial alphabet to read and scale M-spaces. That spatial alphabet includes references to architectural elements such as doors, windows or floors, as well as references to the space of speech, such as punctuation and punctuation marks. 'Un Signe' (2022) in 2.B is both a two-part print of a window and a nod to a hook and a dot, while 'Concrete, Concrete' (2018) in 2.A is both a floor taking the measure of the M space and a handmade painting of a tiled floor of another space.

This exhibition consists of two rooms (2.A and 2.B), on both sides of the roof terrace.

SARAH SMOLDERS A Space Begins, With Speaking | 15.03.2024 > 01.09.2024 | Curator Eva Wittocx



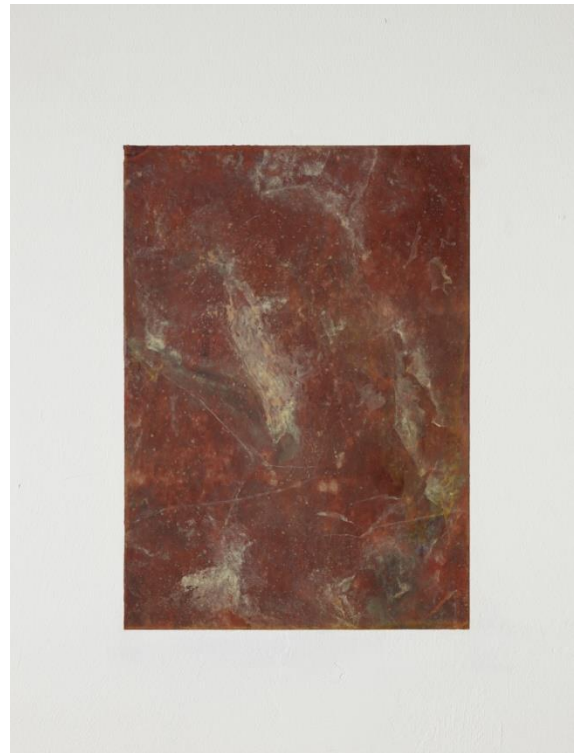
© Sarah Smolders, photo: Elias Derboven



© Sarah Smolders, photo: Elias Derboven



Courtesy of the artist Sarah Smolders, photo: Greg Smolders



Courtesy of the artist Sarah Smolders, photo: Greg Smolders

THERE IS MORE

Lecture | Let's Talk Leuven

Let's Talk Leuven has been featuring numerous artists at (free) artist talks in Leuven since 2018.

→ Thursday May 16 2024 20:00 – 'Artist Talk'

This talk takes place in the context of the exhibition 'Sarah Smolders. A Space Begins, With Speaking' (15.03 t.e.m. 01.09.24) at M. Sarah Smolders enters into a dialogue with the exhibition spaces connecting to M's roof terrace, and in particular with the architectural features she observes there.

Reservation and tickets: www.mleuven.be

ALSO IN M

Alias

M presents 'Alias', a group exhibition on a growing phenomenon in recent art history: fictional artists. The exhibition brings together some 80 artworks from national and international public and private collections in an unprecedented display. It will span five galleries. Piece by piece, the works illustrate the strategies contemporary artists use to conflate fiction and reality, and how they confound our perception of the truth.

A fictional artist is more than just a pseudonym. It is the deliberate construction of an artistic persona with an invented biography that differs, to a greater or lesser extent, from the creator's own. Moreover, fictional artists can equally well constitute a collective – just as the artists who invent them can have both individual and collective identities.

More info on the exhibition here: <https://www.mleuven.be/en/programme/alias>

Lola Daels

M is also launching an exhibition of new work by M-resident Lola Daels on 14 March. Daels spent five months last year as our artist in residence at Cas-co, where she was given the space to delve into her artistic research. Lola Daels creates sculptures and installations in which she questions the notion of authenticity within the current ecological and socio-political context. During her M-residency, she immersed herself in two obsolete Italian techniques: *scagliola* (faux marble) and *pietra dura* (inlaid stone).

Lola Daels' practice is characterised by extensive material research and labour-intensive experimentation. Central to her oeuvre is the relationship between humans and nature. Her visually seductive works are laced with references to ecological disasters, climate change and the irreversible impact of humans on the planet. M presents the results of her residency from 15 March to 1 September 2024 at the museum.

Find more information here: <https://www.mleuven.be/en/programme/m-resident-lola-daels-shows-her-research>

PRACTICAL

M LEUVEN

Vanderkelenstraat 28

3000 Leuven

+32 (16) 27 29 29

info@mleuven.be

www.mleuven.be

Plan your route to the museum

By bicycle

Cyclists are welcome! You can easily and safely leave your bike in the cycle park below Rector de Somerplein. From there, it is a two-minute walk to the museum.

By public transport

M is a ten-minute walk from Leuven station. The nearest bus stop to the museum is Rector de Somerplein. Use Google Maps to plan your route.

By car

The new circulation plan will take you into Leuven and its car parks via several loops. Prefer to avoid city traffic? Park your car in one of the car parks on the outskirts [*randparkings*] and catch a free bus to the city centre. Want to park close to the museum? The closest car park is Ladeuze, which is just a 2-minute walk away. You will also find 18 parking spaces for the disabled (parking height: 1.90m). Click [here](#) for more information on the circulation plan and various parking options.

CONTACT

Hanne Grégoire

Head of Communications & Press

hanne.gregoire@mleuven.be

+32 (0)472 95 52 26

Samantha Fadahunsi

Communications & Press Officer

samantha.fadahunsi@mleuven.be

+32 (0) 491 35 02 95

More information:

Website link:

<https://www.mleuven.be/programma/opening-alias-sarah-smolders-en-toonmoment-m-resident-lola-daels>

High-resolution images can be downloaded here on our press page:

Prezly link:

<https://mleuven.prezly.com/media>